



# NATURE-CRYL®

FAMILY OF DENTURE BASE MATERIALS

*GC*

INTRODUCING **NATURE-CRYL<sup>®</sup>**



Restoration courtesy of Eugene Royzengurt, DTG.

# FAMILY OF DENTURE BASE MATERIALS



The NATURE-**CRYL** family of denture base materials consists of two High Impact denture materials, (NATURE-**CRYL** SUPER HI IMPACT and NATURE-**CRYL** HI-20ET), a self-curing denture base and repair material (NATURE-**CRYL** POUR) and a microwaveable cure material (NATURE-**CRYL** MC). For the first time, one brand of denture base materials is available to meet ALL the needs of the patient, dentist and laboratory.

## **MOST COMPLETE RANGE OF NATURAL LOOKING SHADES IN THE INDUSTRY**

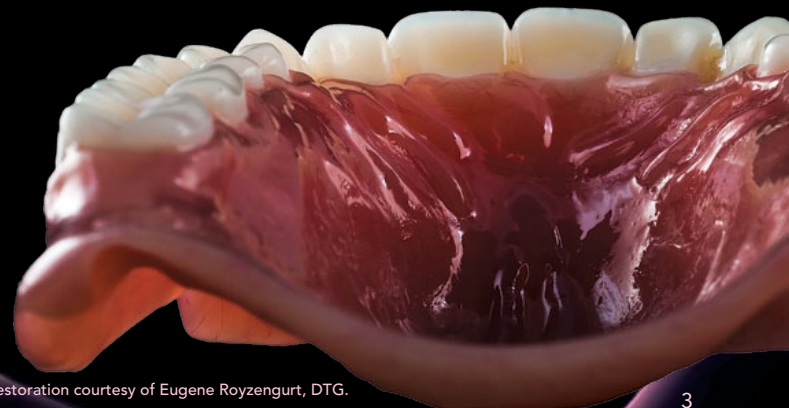
Each of the NATURE-**CRYL** products are available in a harmonized shade system consisting of seven natural looking shades providing a comprehensive range of tissue colors including four of the most popular “pink” shades (characterized with fibers) and three COE-LOR™ heavily pigmented ethnic shades. Computer assisted shade matching assures aesthetically accurate upper and lower dentures, partial dentures, and denture relines and repairs across all NATURE-**CRYL** shades.

## **UTILIZE ANY LABORATORY PROCESSING TECHNIQUES**

It is available for use in the most popular processing techniques including heat cure, fast heat cure, microwave, pour, and reline and repair. Benefit from shade matching across all of the various laboratory-processing techniques!

## **LATEST TECHNOLOGICAL ADVANCEMENTS**

All NATURE-**CRYL** products feature cadmium free pigments, excellent physical properties, accurate fit and complete system shade matching. No matter which process you use, the NATURE-**CRYL** system works for you.



Restoration courtesy of Eugene Royzengurt, DTG.

# NATURE-CRYL<sup>®</sup> SUPER HI IMPACT



NATURE-CRYL SUPER HI IMPACT exceeds all of the requirements of Type 1 Class 1 denture base material. It is ultra high impact, cadmium free, and offers up to 20 minutes working time. NATURE-CRYL SUPER HI IMPACT resists breakage, is easily finished and polished, has superior physical properties, and has a convenient two hour heat cure or overnight cure. NATURE-CRYL SUPER HI IMPACT has superior impact strength that exceeds all other denture base resins on the market today.

*"Because acrylic is the foundation for the entire removable case, my choice of acrylic is an important one. NATURE-CRYL has strength I can depend on, in shades my doctors are familiar with, offering multiple curing options I appreciate. That's why I use NATURE-CRYL!"*

**-TOM ZALESKE**  
Matrix Dental Lab



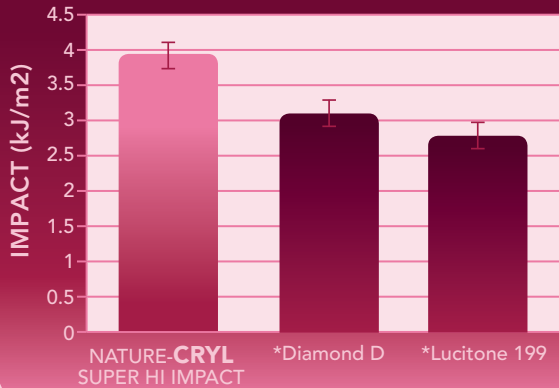
## BENEFITS

- Super high impact to resist breakage or chipping
- Easily finished and polished
- Superior physical properties
- Accurate fit
- Convenient two hour heat cure
- Overnight cure
- Available in seven different shades

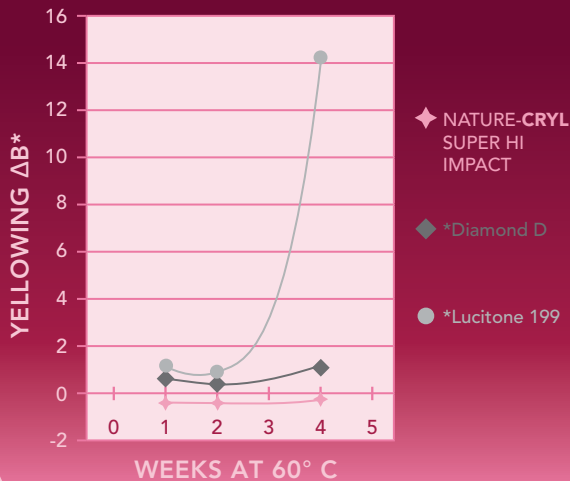
# PHYSICAL PROPERTIES



## IMPACT STRENGTH (CHARPY TEST METHOD)



## COLOR STABILITY AGING STUDY



## AVAILABLE IN 7 DIFFERENT SHADES NATURE-CRYL® FAMILY OF ACRYLICS SHADE GUIDE



#11 COE  
Light Fibered+



#20 COE-LOR  
Mild



#21 COE-LOR  
Moderate



#22 COE-LOR  
Heavy



#34 Light



#35 Light  
Reddish Pink



#36 Original



# NATURE-CRYL® HI-20ET



NATURE-CRYL® HI-20ET is an extremely versatile material, complies with the requirements of ISO 1567 Type 1 Class 1 denture base material and exceeds the ISO 1567 threshold for high impact strength. NATURE-CRYL® HI-20ET's 20 minute cure cycle makes it convenient and denture sections (up to 85mm) can be processed without exothermic porosity. This denture base material can also be processed using conventional two hour or overnight curing cycles. NATURE-CRYL® HI-20ET high impact denture resin's innovative polymer chemistry allows an extended working time of 1 to 1.5 hours at room temperature. This long working time makes it suitable for use with injection techniques.

## BENEFITS

- High impact strength to resist breakage
- Easily finished and polished
- Accurate fit
- 20 minute cure
- Conventional two hour cure
- Overnight curing
- Extended working time
- Can be kept overnight if refrigerated
- Economical



Restorations courtesy of Daniel Hardy, CDT, DTG

# NATURE-CRYL<sup>®</sup> MC



NATURE-CRYL MC is a denture acrylic resin specially created for microwave curing. This material complies with the requirements of ISO 1567 Type 5 denture base material. NATURE-CRYL MC is handled just like conventional resins up to the point of curing. The microwave makes curing easier than conventional methods. Now three minutes and a standard 500 watt microwave are all you need to cure higher quality and more precise dentures. NATURE-CRYL MC eliminates the hours of waiting for conventional water bath curing, while increasing the accuracy and strength of denture bases.

## BENEFITS

- Quick and convenient three minute microwave curing
- No air bubbles or porosity
- Accurate fit
- High strength with excellent physical properties
- Low water absorption
- No staining or color change



Restoration courtesy of Tom Zaleske

# NATURE-CRYL® POUR



NATURE-CRYL POUR is used to process complete or partial dentures, and it also can be used as a laboratory reline and repair material. This material complies with the requirements of ISO 1567 Type 2 Class 2 denture base material. Versatile NATURE-CRYL POUR is the ideal product for the fluid resin technique and since it perfectly matches all NATURE-CRYL System shades, it is the repair resin of choice for all NATURE-CRYL denture base resins.

## BENEFITS

- Flask invested with hydrocolloid or alginate
- Stone not required for investing, easier to deflask
- Pressure Units recommended for curing
- Can be used for making orthodontic appliances, splints, mouth guards and retainers



Restoration courtesy of Tom Zaleske



# CLINICAL IMAGES



# NATURE-CRYL® & GRADIA® GUM SHADES



Now with NATURE-CRYL and GC GRADIA GUM SHADES, you can characterize and customize your removable prostheses outside of the flask.

## WIDE RANGE OF INDICATIONS

GC GRADIA GUM SHADES are specialized light-curable microcomposite that can reproduce gingival tissues for indications such as implant superstructures and other fixed or removable prostheses like crowns, bridges, dentures and partial dentures.

## STRONG, DURABLE AND A VARIETY OF SHADES

The strength, durability and handling properties of GC GRADIA GUM SHADES are all very similar to GC GRADIA. It also has a wide variety of red shades so you can closely match a gingival tissue regardless of their age or ethnicity.

# PERFECT TOGETHER



## THREE COMPOSITE VISCOSITIES

To reproduce different areas of gingival tissue, the GC GRADIA GUM SHADES composite comes in three viscosities;

- a liquid (GC GRADIA GUM SHADES Opaque)
- a gel (GC GRADIA GUM SHADES Modifier and GC GRADIA GUM SHADES Translucent).
- a paste (GC GRADIA GUM SHADES Body)

When combined with the harmonized color system, you get an almost unlimited number of color and texture combinations.

## EASY-TO-BUILD

Just like GC GRADIA, GC GRADIA GUM SHADES has only one simple build-up procedure for standard or multi-layer techniques so you don't have to adjust your technique for different indications. Each step is repeated and pre-cured according to specific pre-set curing times and that's all there is to it!





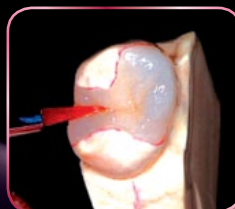
# NATURE-CRYL® & OPTIGLAZE™



## OPTIGLAZE™

### FOR AN AESTHETIC GLOSSY FINISH

For a simplified finishing process, GC has developed a new coating agent called OPTIGLAZE™, which provides an aesthetic glossy surface on artificial teeth, removable dentures, temporary crowns, and individual acrylic trays. It can be used in difficult to polish areas, such as posterior fissures or interproximal areas of indirect composite restorations. Instead of mechanical polishing, take the easier option and get higher quality final gloss with GC OPTIGLAZE™.



# NATURE-CRYL® & OPTIGLAZE™ COLOR

## OPTIGLAZE™ color

### A LIGHT-CURED CHARACTERIZATION COATING

#### Designed for Composite and Acrylic Indirect Restorations

OPTIGLAZE™ color is a revolutionary new material developed specifically to stain and glaze your CERASMART milled blocks, composite, acrylic, and PMMA type materials. You can now change shades, shift value, characterize, create effects and glaze all your resin type prosthetics in no time. Best of all, offer your dentists and patients a more beautiful and aesthetic restoration that will last due to GC's innovative new homogeneously dispersed nano filler technology.



Restorations courtesy of Arian Deutsch CDT, DTG

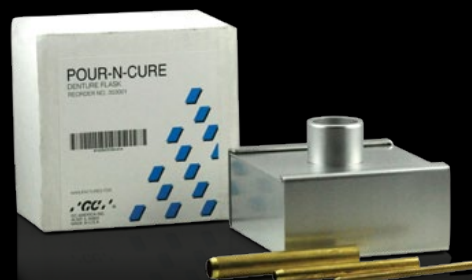




# ANCILLARY PRODUCTS



**LABOLIGHT DUO**  
Light Curing Device



**POUR- N-CURE FLASK**  
Flask For Pour Technique



**NATURE-CRYL® DENTURE BAGS**  
Denture Disinfection Bags



**COECAL™**  
Type III Dental Stone



**COE-SEP™**  
Tinfoil Substitute



**FRP FLASK**  
Microwaveable Flask



**GC RELINE™ SOFT & EXTRA**  
Reline Products



**SUPER-SOFT™**  
Soft Denture Reline Material



**DUPLI-COE-LOID™**  
Duplicating Hydrocolloid Material



**NATURE-CRYL®** Shade Guide  
Shade Guide

NATURE-CRYL<sup>®</sup>

EXPERIENCE BEAUTY & STRENGTH



Restoration courtesy of Tom Zaleske



## NATURE-CRYL®

### NATURE-CRYL MC

- 349650 NATURE-CRYL MC Lt Fib + Pdr 1lb
- 349651 NATURE-CRYL MC COR-LOR Mild Pdr 1lb
- 349652 NATURE-CRYL MC COR-LOR Moderate Pdr 1lb
- 349653 NATURE-CRYL MC COR-LOR Heavy Pdr 1lb
- 349654 NATURE-CRYL MC Light Pdr 1lb
- 349655 NATURE-CRYL MC Lt Reddish Pink Pdr 1lb
- 349656 NATURE-CRYL MC Original Pdr 1lb
- 349657 NATURE-CRYL MC Clear Pdr 1lb
- 349659 NATURE-CRYL MC Liquid 8oz
- 349660 NATURE-CRYL MC Light Fibered + 1:1 Pkg
- 349661 NATURE-CRYL MC COR-LOR Mild 1:1 Pkg
- 349662 NATURE-CRYL MC COR-LOR Moderate 1:1 Pkg
- 349663 NATURE-CRYL MC COR-LOR Heavy 1:1 Pkg
- 349664 NATURE-CRYL MC Light 1:1 Pkg
- 349665 NATURE-CRYL MC Lt Reddish Pink 1:1 Pkg
- 349666 NATURE-CRYL MC Original 1:1 Pkg
- 349667 NATURE-CRYL MC Clear 1:1 Pkg
- 349670 NATURE-CRYL MC Lt Fib + Pdr 5lb
- 349671 NATURE-CRYL MC COR-LOR Mild Pdr 5lb
- 349672 NATURE-CRYL MC COR-LOR Moderate Pdr 5lb
- 349673 NATURE-CRYL MC COR-LOR Heavy Pdr 5lb
- 349674 NATURE-CRYL MC Light Pdr 5lb
- 349675 NATURE-CRYL MC Lt Reddish Pink Pdr 5lb
- 349676 NATURE-CRYL MC COR-LOR Original Pdr 5lb
- 349677 NATURE-CRYL MC Clear Pdr 5lb
- 349679 NATURE-CRYL MC Liquid 32oz

### NATURE-CRYL HI-20ET

- 349700 NATURE-CRYL HI-20ET COR Lt Fib + 1lb Pdr
- 349701 NATURE-CRYL HI-20ET COR-LOR Mild Pdr 1lb
- 349702 NATURE-CRYL HI-20ET COR-LOR Moderate Pdr 1lb
- 349703 NATURE-CRYL HI-20ET COR-LOR Heavy Pdr 1lb
- 349704 NATURE-CRYL HI-20ET Light Pdr 1lb
- 349705 NATURE-CRYL HI-20ET Lt Red Pink Pdr 1lb
- 349706 NATURE-CRYL HI-20ET Original Pdr 1lb
- 349709 NATURE-CRYL HI-20ET 8oz Liquid

- 349710 NATURE-CRYL HI-20ET COR Lt Fib + 1:1 Pkg
- 349711 NATURE-CRYL HI-20ET COR-LOR Mild 1:1 Pkg
- 349712 NATURE-CRYL HI-20ET COR-LOR Moderate 1:1 Pkg
- 349713 NATURE-CRYL HI-20ET COR-LOR Heavy 1:1 Pkg
- 349714 NATURE-CRYL HI-20ET Light 1:1 Pkg
- 349715 NATURE-CRYL HI-20ET Lt Red Pink 1:1 Pkg
- 349716 NATURE-CRYL HI-20ET Original 1:1 Pkg
- 349720 NATURE-CRYL HI-20ET COR Lt Fib + 5lb Pdr
- 349721 NATURE-CRYL HI-20ET COR-LOR Mild 5lb Pdr
- 349722 NATURE-CRYL HI-20ET COR-LOR Moderate 5lb Pdr
- 349723 NATURE-CRYL HI-20ET COR-LOR Heavy 5lb Pdr
- 349724 NATURE-CRYL HI-20ET Light 5lb Pdr
- 349725 NATURE-CRYL HI-20ET Lt Red Pink 5lb Pdr
- 349726 NATURE-CRYL HI-20ET Original 5lb Pdr
- 349729 NATURE-CRYL HI-20ET 32oz. Liquid
- 349730 NATURE-CRYL HI 20ET Lt Fib + 25lb Pdr
- 349731 NATURE-CRYL HI 20ET Original 25lb Pdr
- 349732 NATURE-CRYL HI 20ET Light 25lb Pdr
- 349733 NATURE-CRYL HI 20ET Lt Red Pkg 25lb Pdr
- 349734 NATURE-CRYL HI 20ET COR-LOR Mild 25lb Pdr
- 349735 NATURE-CRYL HI 20ET COR-LOR Moderate 25lb Pdr
- 349736 NATURE-CRYL HI 20ET COR-LOR Heavy 25lb Pdr

### NATURE-CRYL POUR

- 349750 NATURE-CRYL POUR COR Lt Fib + 1lb Pdr
- 349751 NATURE-CRYL POUR COR-LOR Mild 1lb Pdr
- 349752 NATURE-CRYL POUR Moderate 1lb Pdr
- 349753 NATURE-CRYL POUR COR-LOR Heavy 1lb Pdr
- 349754 NATURE-CRYL POUR Light 1lb Pdr
- 349755 NATURE-CRYL POUR Lt Rd Pink 1lb Pdr
- 349756 NATURE-CRYL POUR Original 1lb Pdr
- 349770 NATURE-CRYL POUR COR Lt Fib + 5lb Pdr
- 349771 NATURE-CRYL POUR COR-LOR Mild 5lb Pdr
- 349772 NATURE-CRYL POUR COR-LOR Moderate 5lb Pdr

- 349773 NATURE-CRYL POUR COR-LOR Heavy 5lb Pdr
- 349774 NATURE-CRYL POUR Light 5lb Pdr
- 349775 NATURE-CRYL POUR Lt Rd Pink 5lb Pdr
- 349776 NATURE-CRYL POUR Original 5lb Pdr
- 349779 NATURE-CRYL POUR 32oz. Liquid
- 349790 NATURE-CRYL POUR COR Lt Fib + 25lb Pdr
- 349791 NATURE-CRYL POUR Original 25lb Pdr
- 349792 NATURE-CRYL POUR COR-LOR Mild 25lb Pdr
- 349793 NATURE-CRYL POUR COR-LOR Moderate 25lb Pdr
- 349794 NATURE-CRYL POUR Lt Red Pink 25lb Pdr
- 349795 NATURE-CRYL POUR COR-LOR Heavy 25lb Pdr
- 349796 NATURE-CRYL POUR Light 25lb Pdr
- 353001 NATURE-CRYL POUR Flask
- 349831 NATURE-CRYL POUR 300ml Liquid

### NATURE-CRYL SUPER HI IMPACT

- 349801 NATURE-CRYL SUPER HI IMPACT Lt Fib + 1lb
- 349802 NATURE-CRYL SUPER HI IMPACT Mild 1lb Pdr
- 349803 NATURE-CRYL SUPER HI IMPACT Moderate 1lb
- 349804 NATURE-CRYL SUPER HI IMPACT Heavy 1lb Pdr
- 349805 NATURE-CRYL SUPER HI IMPACT Light 1lb Pdr
- 349806 NATURE-CRYL SUPER HI IMPACT Lt Rd Pkg 1lb
- 349807 NATURE-CRYL SUPER HI IMPACT Original 1lb
- 349808 NATURE-CRYL SUPER HI IMPACT 8oz. Liquid
- 349809 NATURE-CRYL SUPER HI IMPACT Lt/Fib + 1:1
- 349810 NATURE-CRYL SUPER HI IMPACT Mild 1:1 Pkg
- 349811 NATURE-CRYL SUPER HI IMPACT Mod 1:1 Pkg
- 349812 NATURE-CRYL SUPER HI IMPACT Heavy 1:1 Pkg
- 349813 NATURE-CRYL SUPER HI IMPACT Light 1:1 Pkg



# SKUs

- 349814 NATURE-CRYL SUPER HI IMPACT Lt Rd Pkg 1:1
- 349815 NATURE-CRYL SUPER HI IMPACT Original 1:1
- 349816 NATURE-CRYL SUPER HI IMPACT Lt Fib + 5lb
- 349817 NATURE-CRYL SUPER HI IMPACT Mild 5lb Pdr
- 349818 NATURE-CRYL SUPER HI IMPACT Moderate 5lb Pdr
- 349819 NATURE-CRYL SUPER HI IMPACT Heavy 5lb Pdr
- 349820 NATURE-CRYL SUPER HI IMPACT Light 5lb Pdr
- 349821 NATURE-CRYL SUPER HI IMPACT Lt Rd Pkg 5lb
- 349822 NATURE-CRYL SUPER HI IMPACT Original 5lb
- 349823 NATURE-CRYL SUPER HI IMPACT 32 oz. Liquid
- 349824 NATURE-CRYL SUPER HI IMPACT Lt Fib+ 25lb
- 349825 NATURE-CRYL SUPER HI IMPACT Original 25lb
- 349826 NATURE-CRYL SUPER HI IMPACT Light 25lb
- 349827 NATURE-CRYL SUPER HI IMPACT Lt Rd Pkg 25lb
- 349828 NATURE-CRYL SUPER HI IMPACT Mild 25lb
- 349829 NATURE-CRYL SUPER HI IMPACT Moderate 25lb
- 349830 NATURE-CRYL SUPER HI IMPACT Heavy 25lb

## NATURE-CRYL POUR

- 349832 NATURE-CRYL POUR COR Lt Fib + 1:1 Pkg
- 349833 NATURE-CRYL POUR COR-LOR Mild 1:1 Pkg
- 349834 NATURE-CRYL POUR COR-LOR Moderate 1:1 Pkg
- 349835 NATURE-CRYL POUR COR-LOR Heavy 1:1 Pkg
- 349836 NATURE-CRYL POUR Light 1:1 Pkg
- 349837 NATURE-CRYL POUR Lt Rd Pink 1:1 Pkg
- 349838 NATURE-CRYL POUR Original 1:1 Pkg
- 349839 NATURE-CRYL POUR Clear 1:1 Pkg

## NATURE-CRYL GUIDES

- 658001 NATURE-CRYL Shade Guide Card
- 349800 NATURE-CRYL Shade Guide

## FRP FLASK

- 001026 Microwavable Flask

## ANCILLARY PRODUCTS

- 698224 NATURE-CRYL Plastic Bag (25 Pcs)
- 349800 NATURE-CRYL Shade Guide
- 600016 NATURE-CRYL Certified Sticker
- 353001 POUR-N-CURE Flask
- 010077 LABOLIGHT DUO

# GRADIA

## GRADIA GUM

- 001889 GRADIA GUM Starter Package
- 001890 GRADIA GUM Opaque GO11-2.4ml
- 001891 GRADIA GUM Opaque GO12-2.4ml
- 001892 GRADIA GUM Opaque GO13-2.4ml
- 001893 GRADIA GUM Opaque Modifier GOM51-2.4ml
- 001894 GRADIA GUM G20-2.9ml
- 001895 GRADIA GUM G21-2.9ml
- 001896 GRADIA GUM G22-2.9ml
- 001897 GRADIA GUM G23-2.9ml
- 001898 GRADIA GUM Body G24-2.9ml
- 001899 GRADIA GUM Modifier GM30-2.4ml
- 001900 GRADIA GUM Modifier GM31-2.4ml
- 001906 GRADIA GUM Translucent GT41-2.2ml
- 001900 GRADIA GUM Modifier GM31-2.4ml
- 001906 GRADIA GUM Translucent GT41-2.2ml

## GRADIA PRODUCTS

- 001516 GRADIA Diamond Polisher 8g
- 001518 GRADIA Air Barrier Agent 10ml
- 001520 GRADIA Shade Guide Kit
- 001530 GRADIA Composite Primer

# SUPER-SOFT

## SUPER-SOFT

- 348001 SUPER-SOFT Professional Package  
Contains: 1 Powder 6oz. bottle (170g), 1 Liquid, 6oz. bottle (177ml), mixing accessories.
- 320008 1 gallon jar 8lb (3.6kg)
- 320016 2 gallon pail 16lb (7.3kg)

# GC RELINE

## GC RELINE

### GC RELINE SOFT

- 000598 GC RELINE Soft Introductory Kit Contains: One (48ml) cartridge of soft reline material, six type 2L mixing tips, 13ml bottle of Primer R, one silicone point, 9ml bottles of Reline Modifier Parts A and B, mixing pad, pellet sponges, spatula, scoop and brush and plastic case.
- 000599 GC RELINE Soft Refill Cartridge, 48ml

### GC RELINE EXTRA SOFT

- 000600 GC RELINE Extra Soft Introductory Kit Contains: One (48ml) cartridge of extra soft reline material, six type 2L mixing tips, 13ml bottle of Primer R, one silicone point, 9ml bottles of Reline Modifier Parts A and B, mixing pad, pellet sponges, spatula, scoop and brush and plastic case.
- 000601 GC RELINE Extra Soft Refill Cartridge, 48ml

### GC RELINE PRIMER

- 000602 GC RELINE Primer R 13ml bottle



# SKUs



## GC RELINE MODIFIER

- 000603 GC RELINE Modifier Pack Contains:  
9ml bottles of Modifier (Parts A and B),  
pellet sponges and mixing pad
- 152101 GC Cartridge Dispenser 2 NDS (48ml)
- 153012 Mixing Tips NDS, Type 2L (aqua), 12 tips
- 001526 Trimming Point, HP Style, Package of 3
- 001525 Finishing Wheel, HP Style, Package of 12

## COE-SEP

### COE-SEP

- 343591 COE-SEP 2oz bottle
- 343592 COE-SEP quart (946ml) bottle
- 343593 COE-SEP gallon (3.8L) bottle

## OPTIGLAZE COLOR

### OPTIGLAZE COLOR

- 008408 OPTIGLAZE Color Set
- 008409 OPTIGLAZE Color A Plus, 2.6ml
- 008410 OPTIGLAZE Color B Plus, 2.6ml
- 008411 OPTIGLAZE Color C Plus, 2.6ml
- 008412 OPTIGLAZE Color White, 2.6ml
- 008413 OPTIGLAZE Color Ivory White, 2.6ml
- 008414 OPTIGLAZE Color Yellow, 2.6ml
- 008415 OPTIGLAZE Color Orange, 2.6ml
- 008416 OPTIGLAZE Color Pink Orange, 2.6ml
- 008417 OPTIGLAZE Color Red Brown, 2.6ml
- 008418 OPTIGLAZE Color Olive, 2.6ml
- 008419 OPTIGLAZE Color Grey, 2.6ml
- 008420 OPTIGLAZE Color Blue, 2.6ml
- 008421 OPTIGLAZE Color Lavender, 2.6ml
- 008422 OPTIGLAZE Color Pink, 2.6ml
- 008423 OPTIGLAZE Color Red, 2.6ml

- 008424 OPTIGLAZE Color Clear 5ml
- 008425 OPTIGLAZE Color Clear HV 5ml

## COECAL

### COECAL

- COECAL 25 LB (11.4kg)
- 310125 Buff
- 310225 White

- COECAL 50 LB (22.7kg)
- 310150 Buff
- 310250 White



Restoration courtesy of Bart Hyde

# TOUCH *of* GENIUS™

